

HSF

Recommended P.C.B Layout(Top Side)
(PCB BOARD TOLERANCE±0.05)

NOTES:
Current Rating: 1AMP
Contact Resistance: 20mΩ Max
Withstand Voltage: 500V AC/DC
Insulation Resistance: 100MΩ min
Operation Temperature: -40°C to +105°C

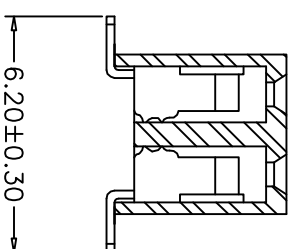
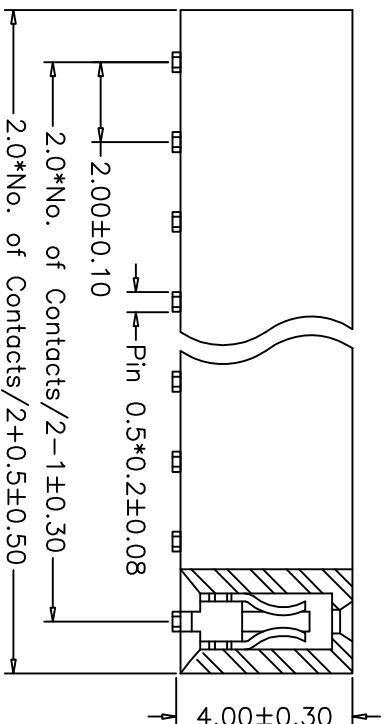
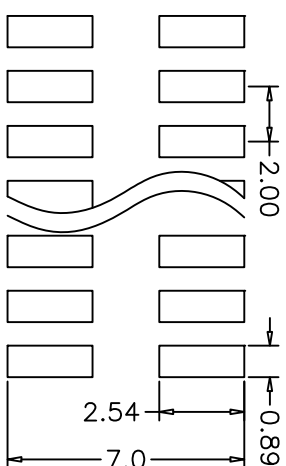
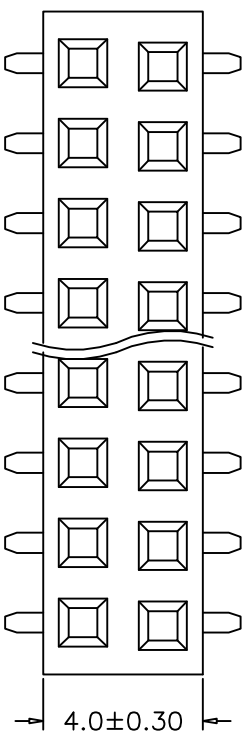
Material:

Contact Material: Phosphor Bronze(C5191)
Contact plating: Gold Flash All Over Nickel.
Insulator Material: Polyester (UL94V-0)
Standard: PA46

Ordering Information

BT2240 2 ** * E 3 A03

No. of Pins 04-80	Contact Plating U=Gold Flash X=10u"Gold W=15u"Gold Y=20u"Gold Z=30u"Gold S=Tin Plated	Insulation & Packing E=PA46+Tube F=PA46+Tube	Contact Shape 3=SMT
----------------------	---	--	------------------------



REV	DATE	MODIFICATION DESCRIPTION	CHANGE	APPROVE	OPERATION	DRAW	Yatin	09/01/31	SCALE	UNIT	mm	SHEET	1/1	PART NO.	BT22402***E3A03	TITLE:	2.00mm Pitch Double Row Female Header SMT H=4.00
A0	09/01/31	NEW			X.X ±0.35	DESIGN			A4	mm							
					X.XX ±0.25	CHECK	Shine										
					X.XXX ±0.20												
					Angle ± 3°												
					DIM												

